

# Omer Tiroche Contemporary Art – Niki De Saint Phalle: Je Suis Une Vache Suisse

June 24, 2016

Arts—Ceramics—Painting | by Harry Seymour



At a time when many central London galleries – particularly in  
Cork Street – are closing it is exciting to find a new venture in

most read.CANDID



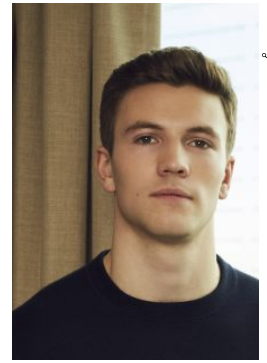
**VANCOUVER  
FASHION WEEK  
SS18 ROUND-  
UP**

the heart of traditional Mayfair. Omer Tiroche Contemporary Art opened just over a year ago in February 2015, but already seems a well-established presence on Conduit Street. The focus is on American and European post-war and contemporary art – and a high standard has been set from the start with artists of the calibre of Gerhard Richter, Sigmar Polke, Alexander Calder and Victor Vasarely featuring.



*Niki de Saint Phalle – Le repas du Lion (courtesy Omer Tiroche Contemporary Art)*

The current exhibition shines the spotlight on the colourful, bizarre and eclectic creations of Niki de Saint Phalle. Associated in the 1960s with Nouveau Réalisme alongside Arman, Christo, Yves Klein and Jean Tinguely and inspired by the designs of Gaudí, Saint Phalle is remarkable for her multi-media approach, from large-scale painted sculptures to enamelled jewellery. She may therefore appear an audacious subject, but the gallery offers a joyful and refreshing approach to her career. The title of the exhibition is taken from a painted wooden sculpture of a cow with mirrored elements; elsewhere are monkeys, snakes and birds all vibrantly coloured, alongside primitive totem-like



**EXCLUSIVE: AN INTERVIEW WITH LEO SUTER**



**WE MET UP WITH MADE IN CHELSEA'S NEWEST ADDITION: CHARLIE MILLS**



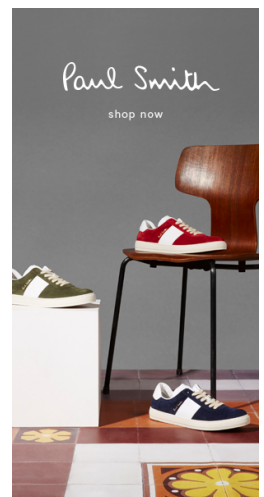
**RACHEL WHITEREAD AT TATE BRITAIN – FORGOTTEN SPACES**

Odalisques. There is an ingenuous playfulness that belies the turbulent life of the artist, and masks the diversity of cultural references implicit in the forms.



*Niki de Saint Phalle.*

Helen Pheby of the Yorkshire Sculpture Park has curated the show, a relationship that stems from the loan of the gallery's largest work, 'Buddha', to the YSP. An image of this imposing mosaic-clad figure forms a backdrop to the smaller pieces on show in the gallery, and hints at the importance of nature to Saint Phalle's work. This is also clear in the designs for the Noah's Ark project sculptures at the Jerusalem Biblical Zoo – an early influence on Tiroche – some exhibited publicly for the first time. The vivid colours and voluptuous forms made for a perfect antidote to a rainy London morning.





*Niki de Saint Phalle – All Over.*

By Kitty Hudson

Niki de Saint Phalle, 28 June – 12 September, opening reception 27 June, at Omer Tiroche Contemporary Art, 21 Conduit Street, London W1S 2XP, Mon-Fri 10-6.

## Related Posts



**SPIRITUALISM IN ART REVEALED AT COURTAULD GALLERY**

JUL 4, 2016 HARRY SEYMOUR



**MALICK SIDIBÉ'S 'THE EYE OF BAMAKO' AT SOMERSET HOUSE - THE YOUTH OF POST-COLONIAL MALI**

NOV 21, 2016 HARRY SEYMOUR



**AN EVER-TRANSCENDING WORLD - THE REIGN OF QUANTITY, PETER PERI, SINGAPORE**

OCT 26, 2014